

124°22'30"E 124°25'00"E 124°27'30"E 124°30'00"E 124°32'30"E 124°35'00"E

10°05'00"N

10°02'30"N

10°00'00"N

9°57'30"N

9°55'00"N

10°05'00"N

10°02'30"N

10°00'00"N

9°57'30"N

9°55'00"N

124°22'30"E 124°25'00"E 124°27'30"E 124°30'00"E 124°32'30"E 124°35'00"E



Republic of the Philippines
PROVINCE OF BOHOL
City of Tagbilaran



PROVINCIAL PLANNING & DEVELOPMENT OFFICE

ELEVATION RANGE MAP

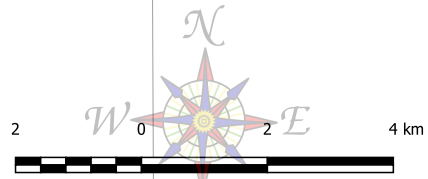
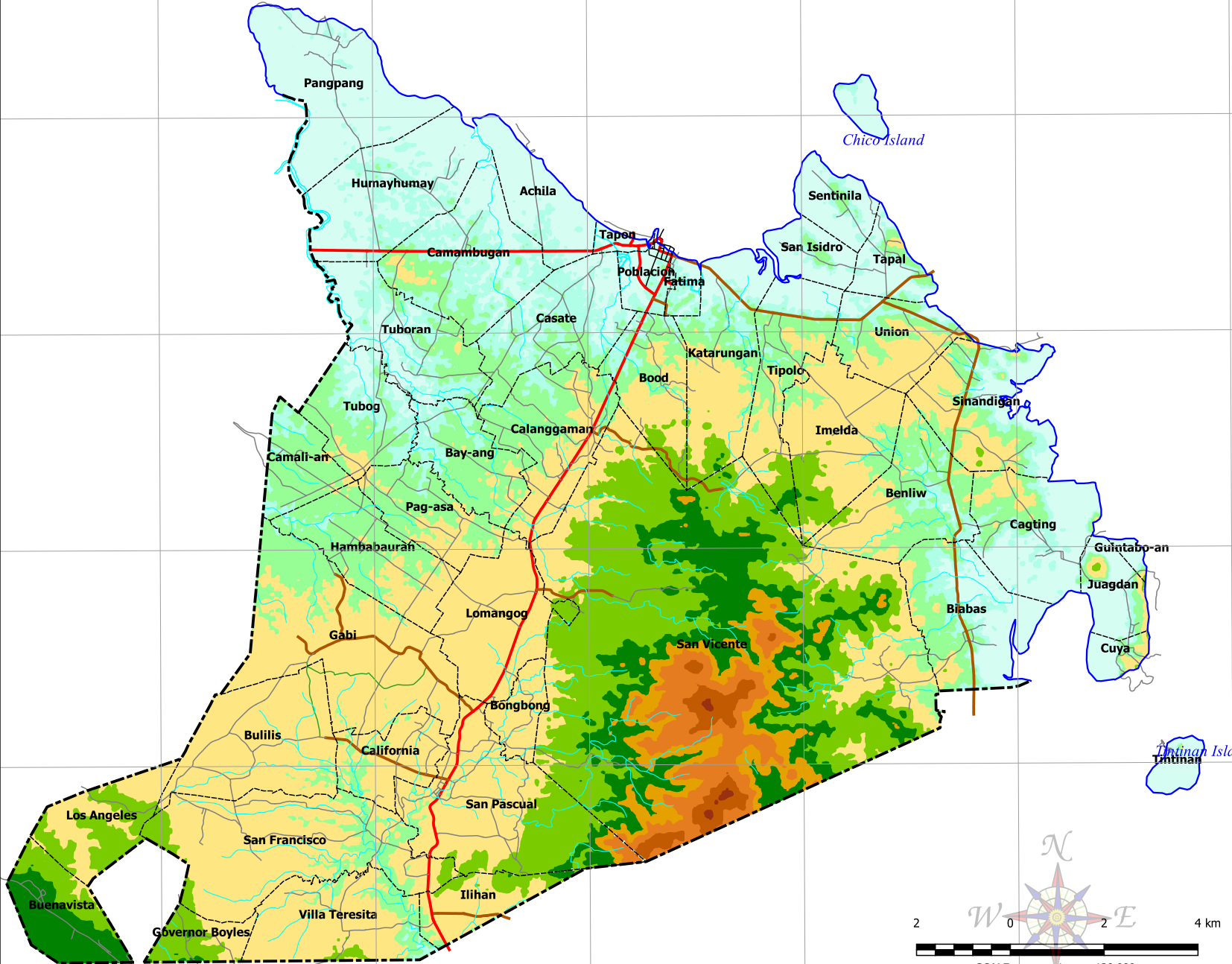
Municipality of UBAY

LEGEND

- Coastline
- Municipal Boundary
- Barangay Boundary
- Rivers and Creeks
- National Road
- Provincial Road
- Municipal Road
- Barangay Road
- Farm-to-Market Road

Elevation Range

- Up to 5 meters
- 5 to 10 meters
- 10 to 20 meters
- 20 to 50 meters
- 50 to 100 meters
- 100 to 150 meters
- 150 to 200 meters
- 200 to 300 meters
- 300 to 400 meters
- 400 to 500 meters



SCALE 1 : 120,000
Universal Transverse Mercator-Zone 51 (N)
World Geodetic 1984 (WGS84)

- NOTES:**
1. Coastline, boundaries, rivers and creeks based on Ubay CLUP 2003-2012
 2. Roads based on the Municipal Roads Database acquired through CRID project
 3. Elevation Range generated from the Shuttle Radar Topography Mission (SRTM) v3 1-arc-second Global Digital Elevation downloaded from the EarthExplorer Website
 4. This map is not authoritative, not verified and to be used for indicative purposes only